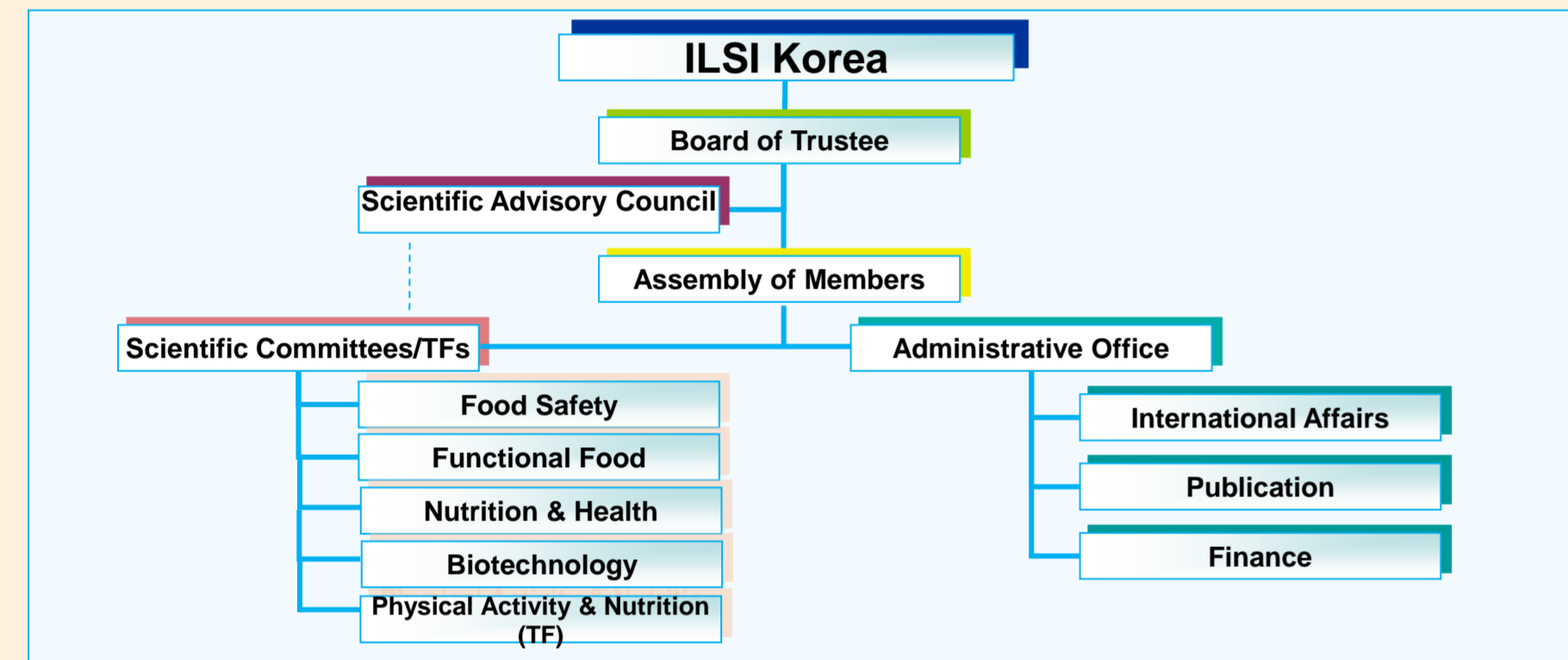




Organizational Features

- Established in 1995
- President : Dr. Kyu Hang Kyung (SeJong University, Seoul, Korea)
- Headquarter in Seoul, Korea
- Funds Supported by Membership and Research Fund (26 Members, December 2011)
- **Administrative Office : Staffs**
 - Executive Director : Dr. Myeong-Ae Yu
 - Administrative Assistants : Mr. Yong Seok Kim/ Ms. Hyeun Kim (part time)



<Organizational Structure of ILSI Korea>



CONTACT INFORMATION

- **Address :** Suite 505, #466-7 Jangan-Dong, Dongdaemun-Gu, Seoul, Korea 130-846
- **Phone :** +82-70-4118-6755~6
- **Fax :** +82-2-3394-4553
- **E-mail :** ilsikorea@ilsikorea.org

2011 ILSI Korea Annual Meeting & Seminar on Water Sanitation and Resources : Industrial Perspectives



- Date : March 25, 2011
- Venue : Meeting Room, Korean Federation of Science & Technology

Scientific Committees & Task Force

- ❖ **Food Safety Committee**
(Chair : Mr. Kyong Mo Ryu, CJ Cheiljedang Co.)
- ❖ **Functional Food Committee**
(Chair : Prof. Hyun-Jin Park, Korea University)
- ❖ **Nutrition & Health Committee**
(Chair : Dr. Oran Kwon, Ewha Womans Univ.)
- ❖ **Biotechnology Committee**
(Chair : Prof. Hae Young Kim, Kyung Hee University)
- ❖ **Physical Activity & Nutrition Task Force**
(Chair: Dr. Jin Kyung Park, Sungshin Women's University)

Partners in Korea

Government agencies

Korea Ministry for Food, Agriculture, Forestry & Fisheries
 Korea Ministry of Health and Welfares
 Korea Food and Drug Administration
 Korea Ministry of Knowledge Economy
 Korea Rural Development Administration
 Korea Consumer Agency (New)
 Korea Atomic Energy Research Institute (New)

Academic Societies/Other Organizations

Korea Society of Food Science & Technology
 Korea Nutrition Society
 Korea Health Industry Development Institute
 Korea Society for Community Nutrition
 Korea Biosafety Clearing House
 Korea Society for Food Safety & Hygiene
 Korea Food Research Institute
 Korea Information Center for Agriculture, Forestry & Fisheries
 Korea Food Safety Information Center (New)
 Korea Food Industry Association (New)

2011 Highlights of the Scientific Activities

Tripartite Collaboration

2011 International Workshop on Current Scientific Advances on Sampling & Detection of Biotech Crops (June 9, 2011/Seoul, Korea)

- Organizers : ILSI Korea
- Sponsors : KFDA, CropLife International, ILSI IFBiC
- Participants : 74 experts from government, academia, food / biotech industry



Discussion Forum on Risk Communication of Food Irradiation (June 23, 2011/Seoul, Korea)

- Organizers : ILSI Korea, Green Food Research Center
- Sponsor : Korea Food Industry Association
- Participants : 43 experts from government (Ministry for Food, Agriculture, Forest and Fishery & KFDA), academia, food industry

2011 Roundtable Meeting on Functional Foods in Korea and Japan (October 20, 2011/Seoul, Korea)

- Organizers : ILSI Korea, Biofood Network Center
- Participants : 45 experts from government, academia, (functional) food industry; Mr. Hiroaki Hamano & Mrs. A Sakama



2011 ILSI CERA Symposium on The Environmental Risk Assessment of GM Plants in Low-Exposure Scenarios (November 18, 2011/Seoul, Korea)

- Organizers : ILSI CERA
- Hosts : ILSI Korea and ILSI Japan / Sponsors: CropLife Asia
- Participants : 41 experts from Government, Academia, Biotech Industry of Korea and Japan

Internal Seminars

Seminar on Mycotoxins in Foods: Assessment and Monitoring Cases (April 21, 2011/Seoul, Korea)

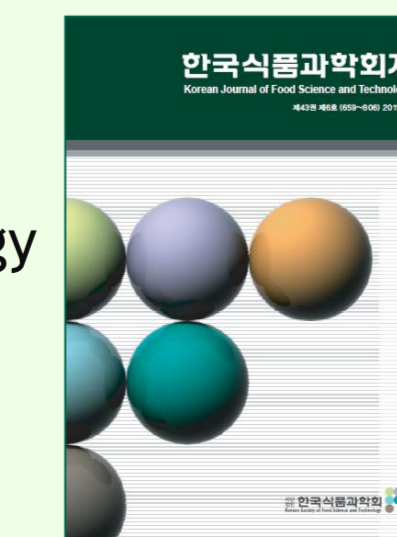


Seminar on Global Framework and Cases of Assessments and Management of Foodborne Pathogens (November 10, 2011/Seoul, Korea)

Publication:

Kim, Jeong-Weon and Baek, Hyung Hee. (2011) Safety of Saccharin and Its Current Status of Regulation in the World. Korean Journal of Food Science and Technology Vol. 43(6): 659-674. (Abstract in English)

Report of the 3rd ILSI BeSeTo Meeting (September 27, 2011; Tokyo, Japan)



Collaboration among ILSI Branches

2011 ILSI BeSeTo Meeting on Food Safety : Inter-branch Meeting among 3 ILSI Branches in Northeast Asia Region; China, Japan & Korea

- September 27, 2011; Tokyo Japan
- Hosting Branch : ILSI Japan
- Participating Branches : ILSI Focal Point in China, ILSI Korea & ILSI Southeast Asia Region (Observer)



Participation to the ILSI Japan/MAFF Project on Investigation of Commodity Food Standards & Analytical Methods in Asia (2nd /3rd term)

- Research Period : Nov. 2010- March 2011
- Research Group : Collaboration with ILSI China, Japan, Korea & Southeast Asia Countries (Indonesia, Malaysia, Philippines, Singapore, Thailand, Vietnam)



Scientific Issues in 2012

Food Safety/Water Issues:

- Food Irradiation,
- Risk Profiling of Newly Emerging Hazardous Substances (MFS) & Analytical Methods of MFS
- Mycotoxins : Assessment & Monitoring
- Risk Communication,
- Antimicrobial Resistance of Foodborne Microbes,
- Food Additives,
- Foodborne/Waterborne viruses, Water Safety

Functional Foods:

- Biomarkers and Clinical Trials of Functional Foods/Ingredients,
- -omics and customized health promotion

Nutrition & Health:

- Obesity Intervention for Children and/or the Elderly,
- Reduction of Sodium in Food
- Sugar Intakes and Health

Biotechnology:

- Sampling & Detection of GM Crops,
- Environmental Risk Assessment,
- Climate Changes & Biotechnology